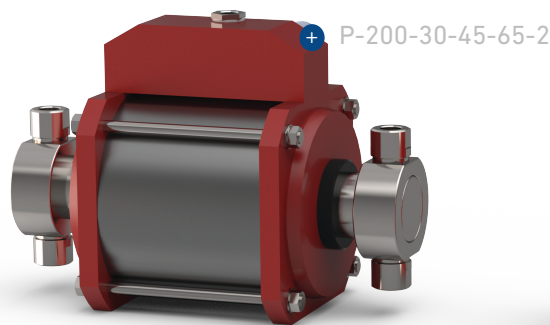


P-Series Air-driven pumps

Quiet. Robust. Maintenance-friendly.

Resato



P-200-30-45-65-2



P-160-65-115-1



Outlet Pressure Range

70- 5,000 bar
(1,025 - 72,000 psi)



Maintenance

developed for easy
maintenance



Mediums

Water-based fluids/emulsions , oil-based
fluid/emulsions, and more

► The P-Series of air-driven pumps reduce maintenance downtime and provide reliability for pumping various liquids with pressure up to 72,500 psi (5,000 bars). The pumps operate with an automatic reciprocating differential area piston principle. They are available as single-acting and double-acting types which provides for a significant range of outlet pressure and flow rate combinations for applications in the oil & gas, automotive, gas processing, hose manufacturing, and other industrial sectors. The P-Series pneumatic pumps can be ATEX certified and are used for pressurizing liquids for burst testing, charging, bolt tensioning, and other high pressure applications.

Benefits & Features

- Minimize maintenance time by replacing check valves in a few minutes.
- It is simple to convert a single acting pump into a double-acting pump in case of extra flow capacity is required.
- Improved cycling speed because air-cycling valve is mounted directly on top of air cylinder providing less frictional resistance.
- Reduction of noise level due to less frictional resistance of air-cycling valves instead of mechanical pilot.
- Freezing of the pump is avoided through an air cycling valve containing a light weight spool to provide high air flow at low air velocity.
- Suitable for use with water because all wetted parts of the high pressure pump section are made of special selected stainless steel.
- Increased lifetime of seals by using specially developed U-PE seals that provide optimum plunger sealing for many mediums.
- Minimized downtime by reducing time of high pressure seal change with the pump design focusing on simple dismantling of air-drive section.

Application Areas

- Hydrostatic testing of Oil and Gas objects
- Hydrostatic testing of hoses
- Pressure testing of hydraulic objects
- (Chemical) injection
- Dismantling of bearings / flanges
- Bolt tensioning
- Food preservation
- Burst testing
- Laboratory testing
- Vessel pressurization
- Research & development applications

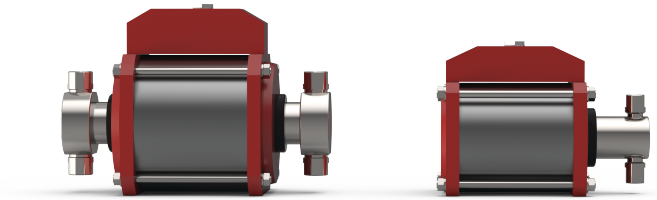


MADE
IN THE
NETHERLANDS

YOUR HIGH PRESSURE EXPERT.

Dimensions

Please contact us for dimensions of a specific air-driven pump.



Technical Information

Type	Pressure Ratio ¹	Displacement Volume ²		Max. Outlet Pressure ³		Flow Capacity ⁴ l/min	Connection ⁵		Weight kg	
		cc	cu.inch	Bar	PSI		Inlet	Outlet		
P160 - 10-1	10	98	5.99	70	1,025	26.3	3/4" NPT	1/2" NPT	16	
P160 - 20-1	21	48	2.94	145	2,100	13.2	3/4" NPT	1/2" NPT	15.2	
P160 - 30-1	28.5	35	2.16	200	2,850	9.5	3/4" NPT	1/2" NPT	15.2	
P160 - 40-1	41	25	1.50	285	4,100	6.4	3/4" NPT	1/2" NPT	15.2	
P160 - 65-1	64	16	0.96	450	6,400	4.2	1/2" NPT	M20x1,5 HP	13.5	
P160 - 115-1	114	8.8	0.54	800	11,400	2.4	1/2" NPT	M20x1,5 HP	13.5	
P160 - 180-1	178	5.7	0.35	1,245	17,800	1.5	1/2" NPT	M20x1,5 HP	13.5	
P160 - 255-1	256	3.9	0.24	1,790	25,600	1.1	1/2" NPT	M20x1,5 HP	13.5	
P160 - 400-1	400	2.5	0.15	2,800	40,000	0.7	1/2" NPT	M20x1,5 HP	13.5	
P160 - 520-1	522	1.9	0.12	3,655	52,200	0.5	1/2" NPT	M20x1,5 HP	13.5	
P160 - 10-2	9.2	196	12.0	65	925	50	3/4" NPT	1/2" NPT	22.1	
P160 - 20-2	20	96	5.87	140	1,980	25	3/4" NPT	1/2" NPT	20.5	
P160 - 30-2	27.5	71	4.31	190	2,750	18	3/4" NPT	1/2" NPT	20.5	
P160 - 40-2	40	49	3.00	280	4,000	12.2	3/4" NPT	1/2" NPT	20.5	
P160 - 65-2	63	31	1.92	440	6,300	8.0	1/2" NPT	M20x1,5 HP	17.1	
P160 - 115-2	113	18	1.08	790	11,300	4.5	1/2" NPT	M20x1,5 HP	17.1	
P160 - 180-2	177	11	0.69	1,230	17,600	2.9	1/2" NPT	M20x1,5 HP	17.1	
P160 - 255-2	255	7.9	0.48	1,785	25,500	2.1	1/2" NPT	M20x1,5 HP	17.1	
P160 - 400-2	399	5.0	0.31	2,790	39,900	1.3	1/2" NPT	M20x1,5 HP	17.1	
P160 - 520-2	521	3.8	0.23	3,650	52,150	0.9	1/2" NPT	M20x1,5 HP	17.1	
P200 - 30-1	32.5	48	2.94	225	3,250	11.0	3/4" NPT	1/2" NPT	22.2	
P200 - 45-1	44.5	35	2.16	310	4,450	7.8	3/4" NPT	1/2" NPT	22.2	
P200 - 65-1	64	25	1.50	450	6,400	5.4	3/4" NPT	1/2" NPT	22.2	
P200 - 100-1	100	16	0.96	700	10,000	3.5	1/2" NPT	M20x1,5 HP	20.5	
P200 - 180-1	178	8.8	0.54	1,245	17,800	1.9	1/2" NPT	M20x1,5 HP	20.5	
P200 - 280-1	278	5.7	0.35	1,945	27,800	1.2	1/2" NPT	M20x1,5 HP	20.5	
P200 - 400-1	400	3.9	0.24	2,800	40,000	0.9	1/2" NPT	M20x1,5 HP	20.5	
P200 - 625-1	625	2.5	0.15	4,375	62,500	0.6	1/2" NPT	M20x1,5 HP	20.5	
P200 - 815-1	816	1.9	0.12	5,000	72,500	0.4	M16x1,5 HP	M16x1,5 HP	20.5	
P200 - 30-2	31.5	96	5.87	220	3,150	21.0	3/4" NPT	1/2" NPT	28.1	
P200 - 45-2	43.5	71	4.31	305	4,350	15.0	3/4" NPT	1/2" NPT	28.1	
P200 - 65-2	63	49	3.00	440	6,300	10.5	3/4" NPT	1/2" NPT	28.1	
P200 - 100-2	99	31	1.92	695	9,900	6.6	1/2" NPT	M20x1,5 HP	24.7	
P200 - 180-2	177	18	1.08	1,240	17,700	3.7	1/2" NPT	M20x1,5 HP	24.7	
P200 - 280-2	277	11	0.69	1,940	27,700	2.4	1/2" NPT	M20x1,5 HP	24.7	
P200 - 400-2	399	7.9	0.48	2,795	39,900	1.6	1/2" NPT	M20x1,5 HP	24.7	
P200 - 625-2	624	5.0	0.31	4,370	62,400	1.0	1/2" NPT	M20x1,5 HP	24.7	
P200 - 815-2	815	3.8	0.23	5,000	72,500	0.8	M16x1,5 HP	M16x1,5 HP	24.7	

Notes:

¹ Ratio - driving surface air drive piston / driven surface high pressure piston (calculated)

² Displacement volume per double stroke (calculated)

³ Static outlet pressure (calculated and maximum allowed)

⁴ Approximate flow at an air drive of 6 bar / 87 psi and an outlet pressure of 0 bar / psi

⁵ Connection 3/4" BSP, delivered with 1/2" BSP reducer

Options

- ATEX version available
- Mounting brackets
- Air controls
- Adapters
- Conversion kits
- Ratio kits
- Special seals

Since 1991.

Resato is a Dutch provider of smart high pressure solutions with the aim to increase the productivity of its worldwide customers. We develop and manufacture waterjet cutting systems as well as components and systems for pressure testing, injection, and controlling up to 14,000 bars with the mission to meet and exceed the expectations of our customers. Since 2017, we are developing hydrogen filling solutions and high pressure equipment.

YOUR HIGH PRESSURE EXPERT.

Copyright 2017. All rights reserved.

Need more advice?

www.resato.com/call-me-back

📍 Resato International B.V.
Duitslandlaan 1
9403 DL Assen
Netherlands

✉ info@resato.com
☎ +31 (0) 50 501 6877